

# HairConfirm™

## Hair Follicle Drug Testing Kit



**hairconfirm®**  
hair follicle multi-drug test kit

With over 1.5 million hair follicle tests performed, our HairConfirm™ collection kit is a cut above the rest. Hair specimens can identify substance abuse up to 90 days prior to analysis, offering longer detection cut-off times than any other specimen type. Each all-inclusive hair follicle kit screens for 7 illicit substances, plus 5 prescription drugs depending on your personal or professional needs. Each collection kit includes fully pre-paid shipping labels, and can be upgraded to Overnight shipping upon request for the fastest turnaround time. For the most irrefutable drug testing solution, try HairConfirm™.

### TESTS FOR:

AMP/ COC / MDMA / THC / mAMP / MOP/OPI / PCP  
PLUS Lorcet (Hydrocodone), Vicodin (Hydrocodone), Dilaudid (Hydromorphone), Oxycontin (Oxycodone), Percocet (Oxycodone) for HairConfirm™ Prescription & HairConfirm™ Business Prescription

### PRODUCT FEATURES:

- CLIA-accredited laboratory testing
- Tests for SAMHSA 5 drugs of abuse, and more
- Longest detection cut-off time, up to 90 days before testing
- Accurate, elaborate results delivered electronically
- MRO review of positive results using GC/MS (HairConfirm™ Business)
- Includes shipping labels with optional Overnight upgrade
- Confidential and non-invasive (results disclosed to employer with HairConfirm™ Business)

TEST	DESCRIPTION	CUT-OFF LEVEL
mAMP/AMP	METH/AMPHETAMINES	500 PG/MG
COC	COCAINE	500 PG/MG
THC	MARIJUANA	1 PG/MG
MOR/OPI	MORPHINE/OPIATES	200 PG/MG
PCP	PHENCYCLIDINE	300 PG/MG
HYDROCODONE	LORCET/VICODIN	200 PG/MG
HYDROMORPHONE	DILAUDID	200 PG/MG
OXYCODONE	OXYCONTIN/PERCOCET	200 PG/MG

screened for only in HairConfirm™ Prescription & HairConfirm™ Business Prescription

## HAIRCONFIRM™ IS A CUT ABOVE TRADITIONAL METHODS OF DRUG TESTING.

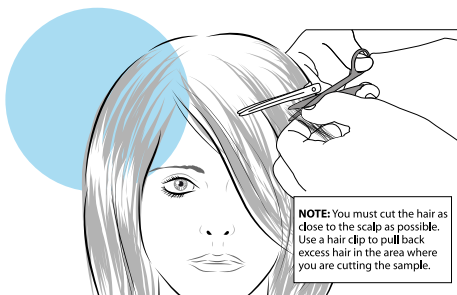
Our HairConfirm™ products consolidate home-based testing with lab-grade assurance in an easy-to-use package. This comprehensive hair follicle drug testing kit identifies substance abuse with precision and privacy. Since hair drug tests are less likely to be adulterated, HairConfirm™ offers more reliable results than other method of drug testing. HairConfirm™ is a foolproof way to maintain a drug-free environment.

## INSTRUCTIONS

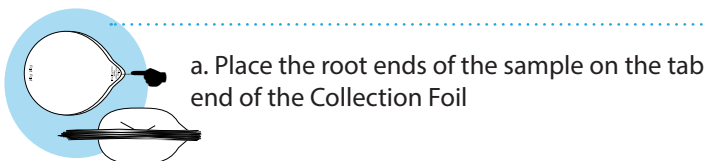
### STEP 1: CUTTING OF HAIR

- Wipe the scissors with an alcohol wipe
- Select a long thin strip of hair (approximately 1/2 the diameter of a pencil) and clip the hair sample as close to the scalp as possible.

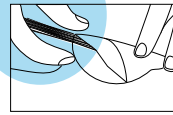
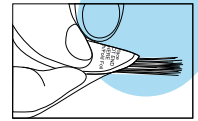
You should have approximately 90-120 strands of hair. More strands are needed if the hair is less than 1.5 inches long.



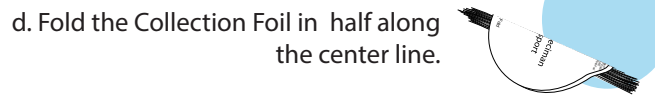
### STEP 2: PREPARING THE HAIR SAMPLE



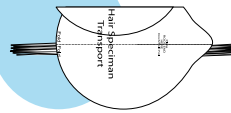
- Crimp the tab end over the root ends of the sample



- Straighten the hair lengthwise along the center of the Collection Foil



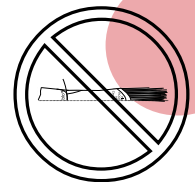
- Fold the Collection Foil in half along the center line.



- Fold the Collection Foil lengthwise again.

## IMPORTANT:

Please do not crumble the foil!

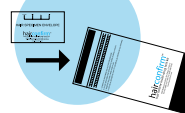


## STEP 3: MAILING YOUR SAMPLE



- Place the Collection Foil in the Hair Specimen Pouch. Seal the pouch with the small security label provided in the kit. Put initials and the date on the small security label.

- Place the rest of the Specimen ID card in a safe place, as you will need this ID number and passcode to register your test and obtain your results.



- The parent/guardian must initial and date the Security Label, and confirm the hair sample type.

- Place the sealed Hair Specimen Envelope in the Clear Pouch. Seal the Clear Pouch in the FedEx Clinical Pak. Affix the shipping label.

\*For HairConfirm™ Business, please consult insert as instructions may vary slightly

## OBTAINING RESULTS

After the sample is mailed, you must register your test at [www.hairconfirm.com](http://www.hairconfirm.com) to obtain your results. You will need your Specimen ID number, passcode and e-mail address to register.

**NOTE:** Results will be available approximately 2-3 business days after the sample is received by the laboratory. Please note that lab processing times may vary.